



NAVIGATOR
GPS

X MARKS THE SPOT OF EFFICIENCY.



RIP MANAGER

- **Easy-to-use**
Desktop control of major RIP functionality
- **Integrated soft proofing**
Preview jobs from any desktop
- **Job Tracking**
Track job progress throughout the system
- **Modular**
Start with the features you need
- **Expandable**
Add features and capabilities as needs dictate
- **Flexible**
Protect existing RIP investment

Navigator RIP Manager helps increase productivity, manage your workflow, and reduce costs.

With an easy-to-use graphical user interface, Navigator RIP Manager allows operators to manage and control jobs from virtually any prepress workstation. It allows operators to design and store specific workflow sequences and reduces the opportunity for human error.

Navigator RIP Manager's PDF option allows for greater control over PDF file management and creates industry standard PDFs as the intermediate file format.

Your investment in Navigator RIP Manager includes not only the software, but the expertise to make the solution successful in your business. Xitron partners are trained and certified to support Navigator RIP Manager.

The screenshot displays the Navigator RIP Manager software interface. At the top, it shows 'Demo dongle mode, days remaining: 363'. Below the menu bar (File, View, Jobs, Workflows, Help) is a toolbar with various icons for job control. The main area features a workflow diagram for 'CTP 2400' with steps: HatFolder, Stabilizer, Preflight, Proof Proof - Epson 7880, Navigator 8.5r1 screen, and PT-R8000. Below the workflow is a table titled '4 Jobs' with columns for Job Name, Job Number, Status, Workflow, and Status Message.

| Job Name | Job Number | Status | Workflow | Status Message |
|----------------------------------|------------|--------------------|----------|----------------|
| Xitron_Seybold Trap Test.qxd (1) | 59 | Paused - Preflight | CTP 2400 | |
| HatFolder | | | | |
| Stabilizer | | | | |
| Preflight | | | | |
| Golfer.pdEPS (1) | 60 | Paused - Preflight | CTP 2400 | |
| Trout_w_rotation (1) | 61 | Complete | CTP 2400 | |
| HatFolder | | | | |
| Stabilizer | | | | |
| Preflight | | | | |
| Proof | | | | |
| Navigator 8.5r1 | | | | |
| 1. Trout_w_rotation (C) | | | | |
| 1. Trout_w_rotation (M) | | | | |
| 1. Trout_w_rotation (Y) | | | | |
| 1. Trout_w_rotation (K) | | | | |
| Proof Proof - Epson 7880 | | | | |
| Navigator 8.5r1 screen | | | | |
| PT-R8000 | | | | |
| HatFolder | | | | |
| Stabilizer | | | | |
| TUT.PS | | | | |
| Preflight | | | | |

Extensive Job Management

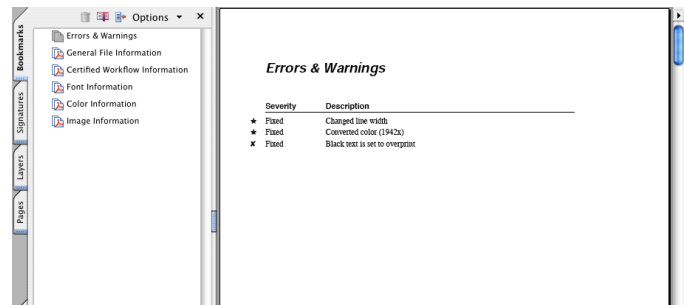
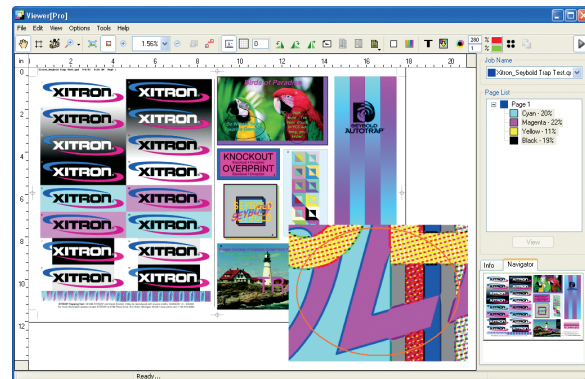
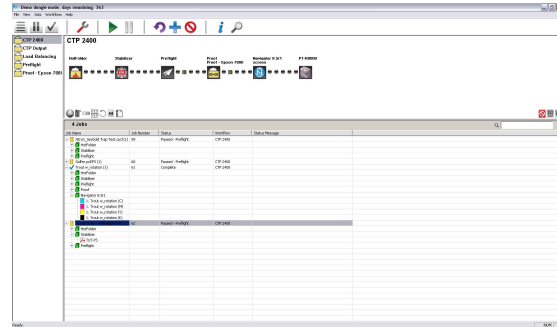
RIP Manager's graphical user interface allows an operator to manage and control jobs from virtually any pre-press workstation, unlike legacy systems with a single point of control. Job tracking can be monitored on any workstation throughout the production process. Specific workflow sequences can be designated and stored, greatly reducing the opportunity for human error. Control of commonly used Page Setup features reduces the number of individual Page Setups required.

Integrated Viewer

Navigator RIP Manager includes an integrated Viewer which enables prepress operators to softproof jobs at their workstations at any stage throughout the production process. Unlike some viewers, the RIP Manager Viewer does not stop or delay your production. An operator may view a job at anytime without having to disable outputs or wait for another operator to complete a task. The Viewer provides job views from 3% - 800% dependent on the overall job. Black traps can be viewed as gray to allow the operator to check the accuracy of traps prior to final output.

PDFTools Option

Navigator RIP Manager's PDF option provides for greater control over PDFs enabling you to become an integral player as new standards develop and are implemented throughout the industry. Utilizing the PDF Tools, you can automatically create PDFs from incoming PostScript files and then Preflight the PDFs using the integrated Preflight capability to fix many common job problems. Preflight reports can be automatically generated to alert the operator to any problems with the file such as low resolution images.



➤ GROUP HEADQUARTERS:
781 AVIS DRIVE, STE. 200
ANN ARBOR, MICHIGAN 48108
MAIN: 734.913.8080
FAX: 734.913.8088
XITRONSALES@XITRON.COM
WWW.XITRON.COM

CONTACT YOUR XITRON DEALER FOR MORE INFORMATION:



YOUR BUSINESS. OUR DRIVE.